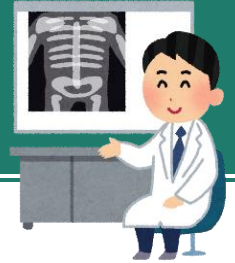


Academic Year 2019

Fall Chest X-rays

For students enrolling in October 2019



Date/Time

○ October 21 (Mon) 11:30 ~ 12:30 (Be punctual!)

※ Undergraduate Students

※ Graduate students/non-degree students (Science, Pharmaceutical Sciences, Engineering, Information Sciences, Environmental Studies, all research institutes)

○ October 23 (Wed) 11:30 ~ 12:30 (Be punctual!)

※ Graduate students/non-degree students (Arts and Letters, Education, Law, Economics and Management, Medicine, Dentistry, Agricultural Science, Life Sciences, International Cultural Studies, Educational Informatics, Biomedical Engineering)

If you are unable to come on the day designated for your department, you may come on the other day.

Place

Student Health Care Center (Kawauchi Kita Campus)A09

※ There are no parking spaces, so please come by public transportation etc.



Student Health Care Center(A09)

Eligibility

Students enrolling in October 2019

(It includes non-degree students who enrolled in May 2019 or later and will be enrolled for one month or longer.)

※ The above excludes students who underwent the Student Medical Examinations held in May 2019 (example: transfer students).

※ Excludes students who underwent Student Medical Examinations in May 2019.

Bring

Student ID card, or document (such as enrollment notice) that shows your name and student ID number.

Note: If you do not bring the above, you will not be able to undergo the examination!

《Instructions》*Please refer to the attached.

Please wear a plain t-shirt for the x-ray.

(Do not wear printed or embroidered shirts, or clothes with joined bottoms and tops, such as one-piece dresses etc.)

Do not wear shirts with metal parts or buttons. Do not wear necklaces etc.

If you have long hair, please tie it back with an elastic band etc.

《X-ray Results and Medical Exam Certificates》

※ If you require additional tests, you will be contacted by phone by around November 15.

※ If you require a medical examination certificate, additional tests will be necessary (internal exam, blood pressure, height/weight, eyesight). Please call the Student Health Care Center (022-795-7829) to make an appointment. Issuing medical examination certificates requires some preparation time. Please inquire on or after November 28th.

《Working Students》

If you underwent a medical exam that included a chest x-ray at your place of employment (or are scheduled to do so), you do not need to undergo the fall chest x-ray if you bring a photocopy of your results to the Student Health Care Center. However, in this case the center will be unable to issue a Medical Examination Certificate.

《Student Medical Examinations from Next Year》

Please undergo the Student Medical Examination in May from next year on.

In the event of an emergency (natural disaster etc.), please see the Student Health Care Center website:

<http://www.health.ihe.tohoku.ac.jp/>

Inquiries: Student Health Care Center, Examination Office Tel 022-795-7829



胸部レントゲン検査を受けるにあたって

Instructions for undergoing chest x-rays

正確な診断をするため、服装・髪型・装飾品に注意が必要です！！

In order to get an accurate result, you need to be mindful of your clothing, hair, and accessories.

ここに注目！

Please be careful of the following:

Good

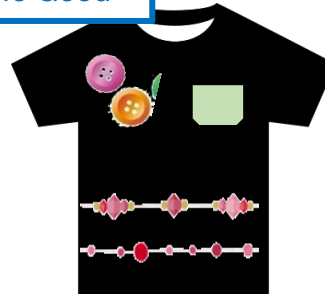


薄手で無地の服1枚であれば着用OK。

Wear a single, thin, plain shirt during the x-ray.

女性の方へ。
ブラ、ブラ付き下着は外してください。
Women: Please remove brassieres, or
garments with built-in brassieres.

No Good



イラスト・刺繍入りボタン・ポケットあり
ビーズなどの装飾品のある服は着用できません。
We cannot take the x-ray if you are wearing a
shirt with illustrations/patterns, buttons, pockets,
beads, or other ornamentation.

Good



No Good



髪の長い方は、肩や首にかからないよう
に結んでください。

If you have long hair, please tie it up so
that it does not touch the shoulders or the
nape of your neck.

No Good



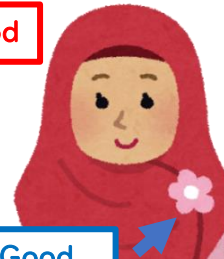
治療用の湿布・磁石付き絆創膏は外してください。
Please remove any adhesive medical compresses,
adhesive magnets, etc. from your skin.

No Good



ネックレスは外してください。
Remove necklaces.

Good



ヒジャブは薄い布なら着用したままでOKです。しか
し、固定のためのブローチやピンが肩・胸にかかる
場合は外す必要があります。

Religious garments, such as hijabs, are fine as long
as they are made of thin materials.

However, you must remove any fasteners, such as
broaches, pins, etc., from the shoulder/chest area.

No Good